



# Emotionale Botanik

## Whispers in the garden, Gossip that doesn't hurt

Imagine a world where plants don't just grow. They speak, express emotions, and interact with humans in real time! Our **AI-powered system** goes beyond displaying data and making decisions. It allows plants to communicate their needs and feelings using speech. Sensors track light, temperature, humidity, soil health, and even the plant's internal electrical signals, transforming them into a natural conversation. But that's not all! A built-in camera detects your facial expressions, enabling the plant to respond to your mood, creating a truly interactive, two-way experience. By integrating local weather predictions and global market trends, the AI develops precise strategies, from smart irrigation and pollination to minimizing pesticide use, helping farmers increase crop yield and reduce waste.



Image source: <https://tech-ceos.com/>

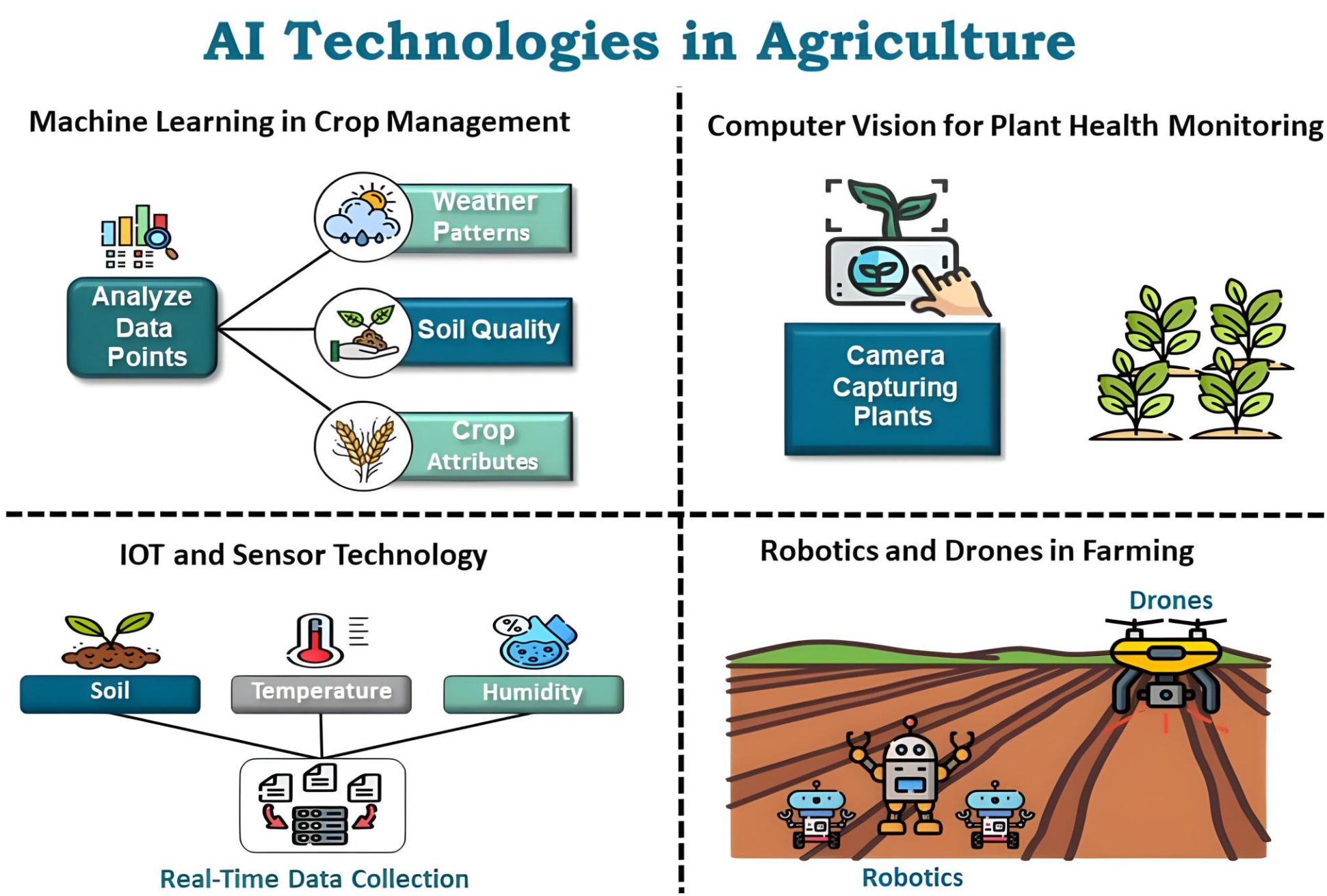


Image source: <https://www.educba.com/>

This project bridges biology, AI, and environmental science, preparing students for the future of **sustainable agriculture** while tackling real-world challenges like water scarcity and food security.