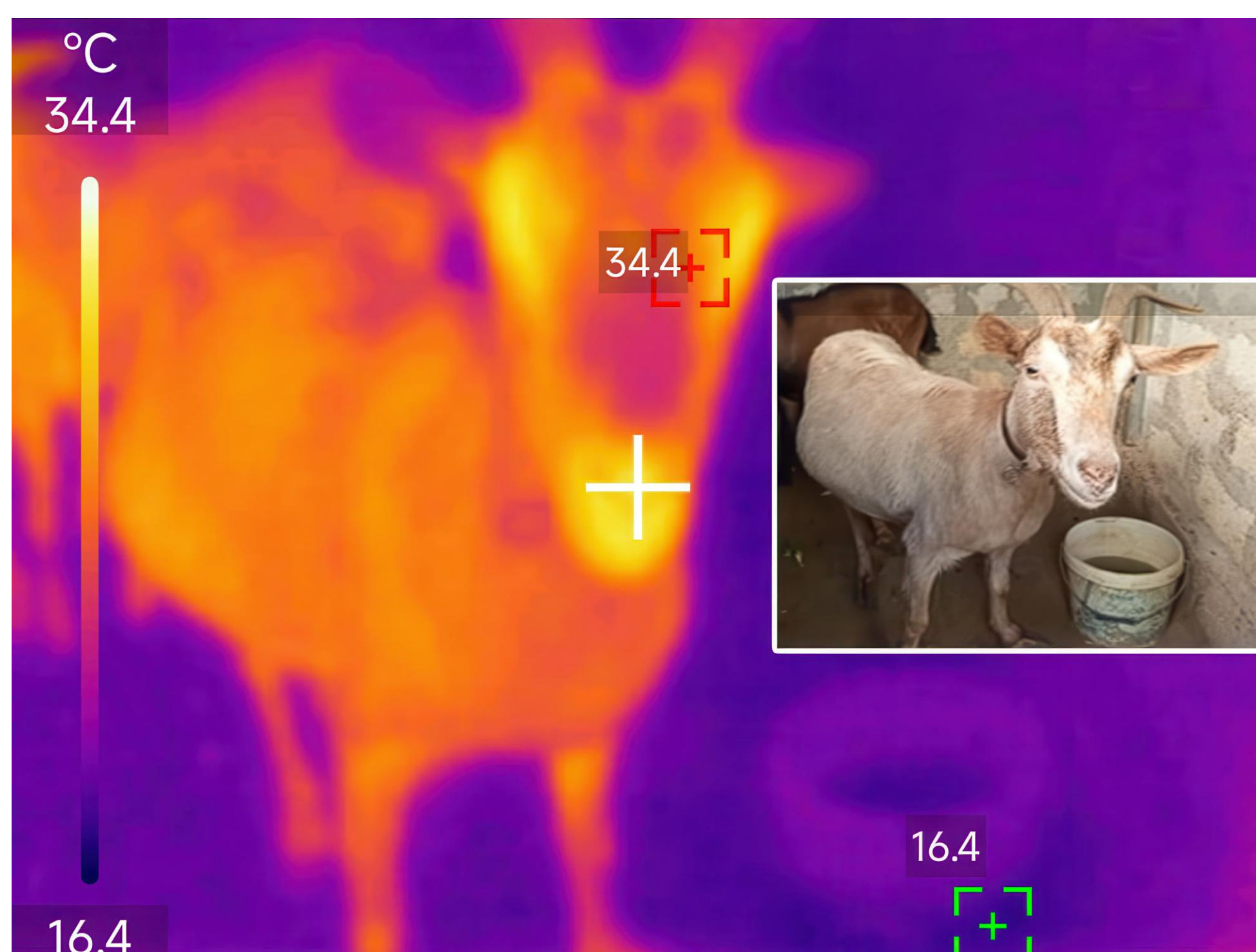


FeelosophAI

When silence says more than words ever could

Our innovative project is dedicated to uncovering hidden pain in non-verbal autistic toddlers. Many children who cannot communicate through words struggle to express distress, leaving caregivers unaware of their condition. Our approach harnesses artificial intelligence to analyze facial expressions and drawing patterns, revealing signs of anxiety, discomfort, and pain. Inspired by nature, we also look to goats, animals that, like these children, cannot verbalize their suffering. Using thermal imaging, we detect shifts in temperature markers that indicate pain. By training our AI on these insights, we refine its ability to recognize distress in children.



By redefining the way we understand pain in those who cannot express it, we bridge the gap between **science and empathy**, thus ensuring that no child suffers in silence.