

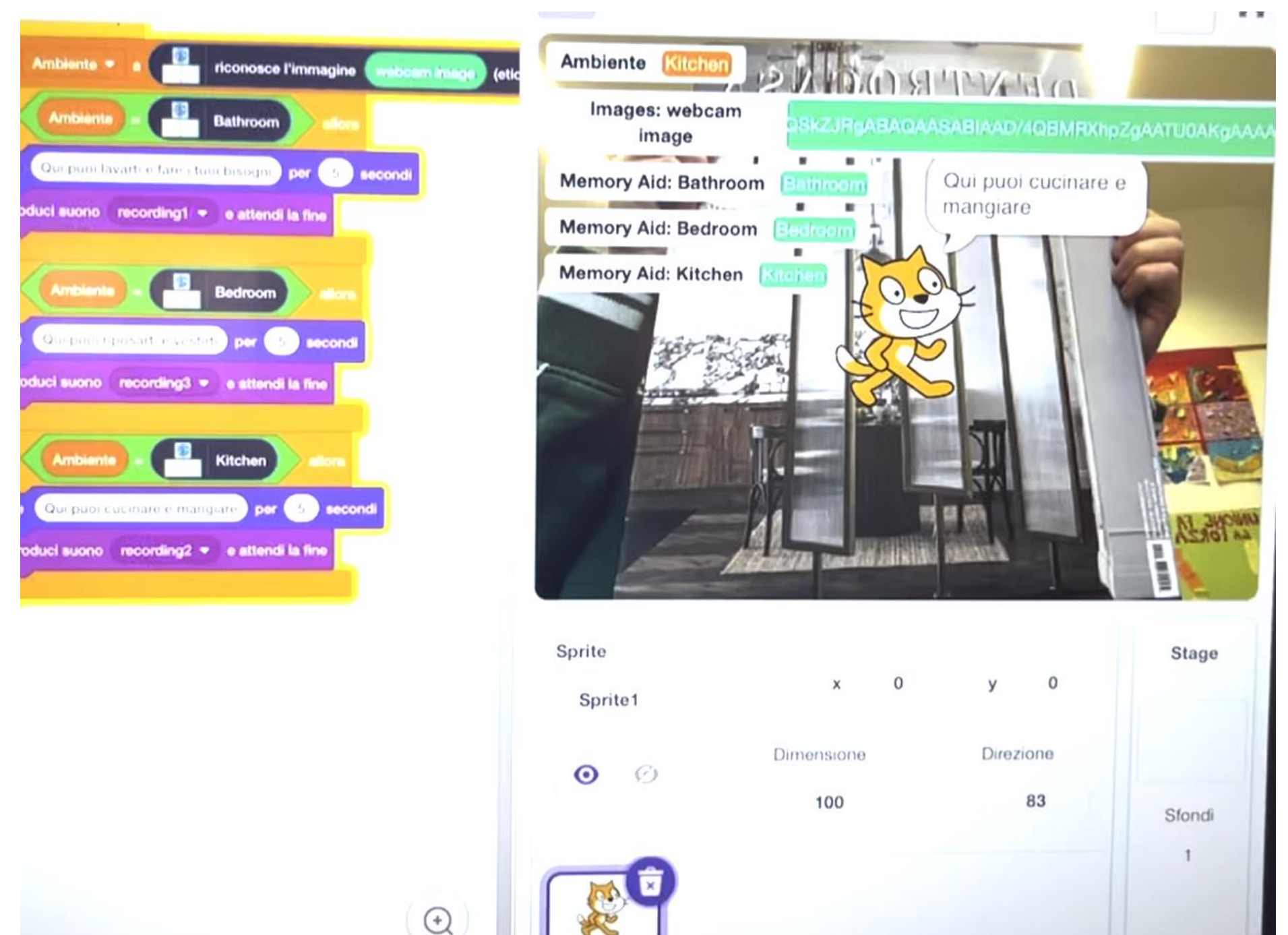
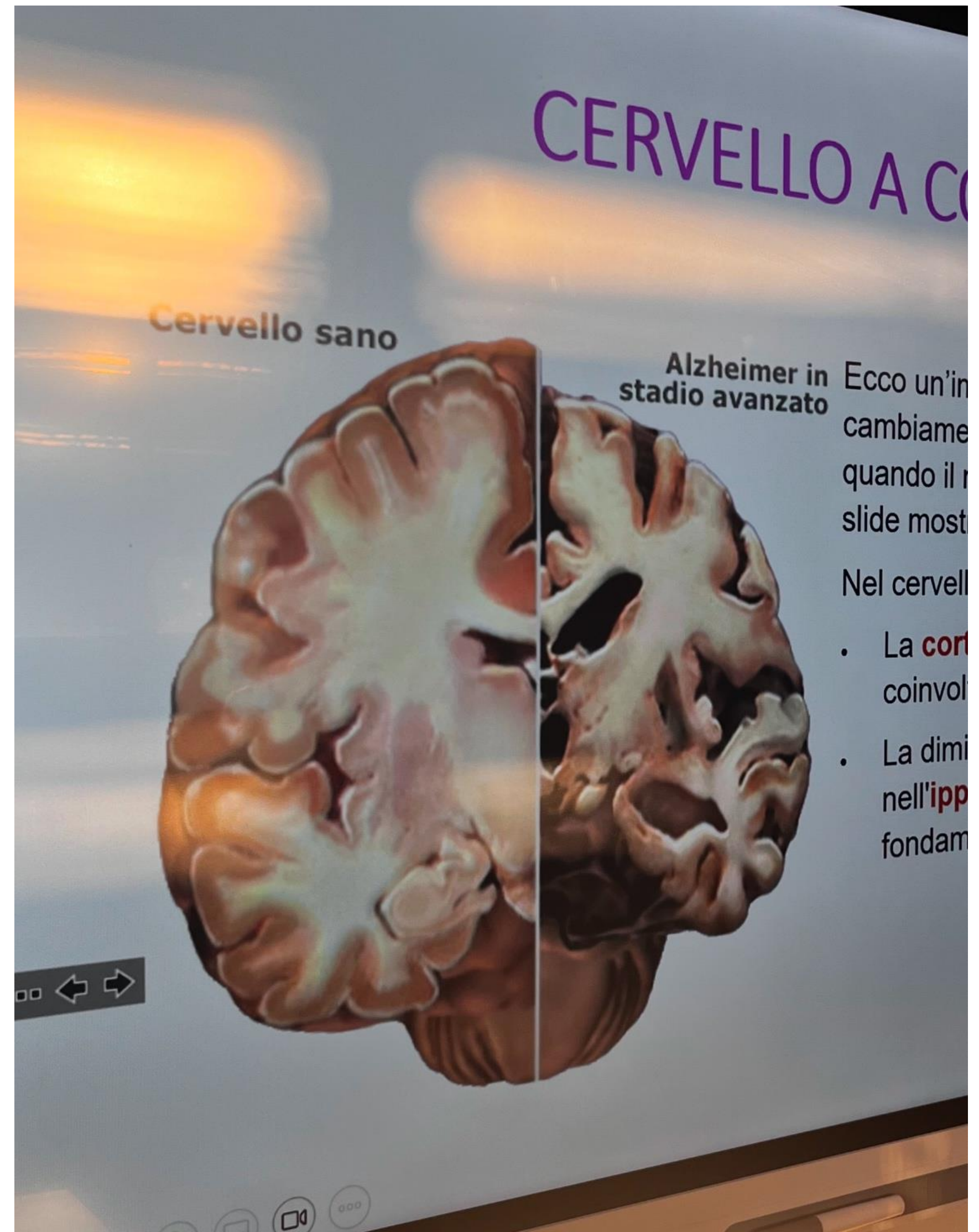
A la recherche du temps perdu

An AI assistant for home navigation



Memory is the invisible thread that connects us to our identity and the world around us. But what happens when this thread starts to break? Our project, inspired by research on memory and the daily challenges faced by individuals with Alzheimer's and dementia, has allowed students to explore Artificial Intelligence in a deeply meaningful way.

Using *Teachable Machine* and *Scratch 3.0*, the students developed an AI assistant capable of recognizing domestic environments and their characteristic objects. By showing an object to the camera, the AI identifies the corresponding room and suggests what activities can be performed there, providing practical support for individuals with memory loss.



This project not only fostered STEM competencies and strengthened social skills, but also showcased how artificial intelligence can support individuals with cognitive impairments.